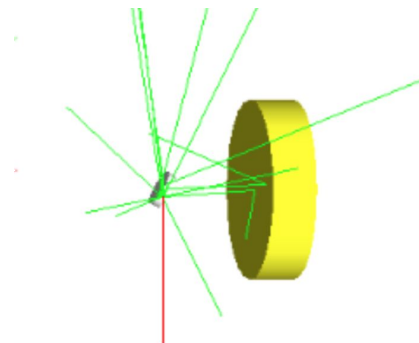
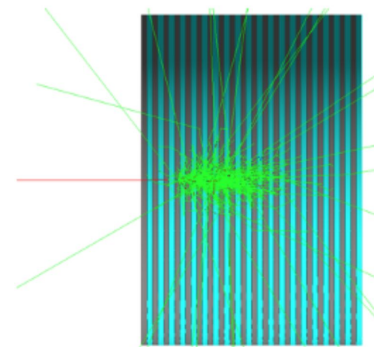




Competence Centre on Simulation and Big Data

Highlights - simulation

- Support and maintenance for an Advanced Example of the Geant4 simulation toolkit, for which LIP has been holding responsibility for several years.
- Teaching of advanced detector simulation techniques, integrated into the curricula of undergraduate courses and doctoral programs.
- Extensive use of the Virtual Radiation Laboratory by postgraduate students, in projects simulating radiation-matter interactions.

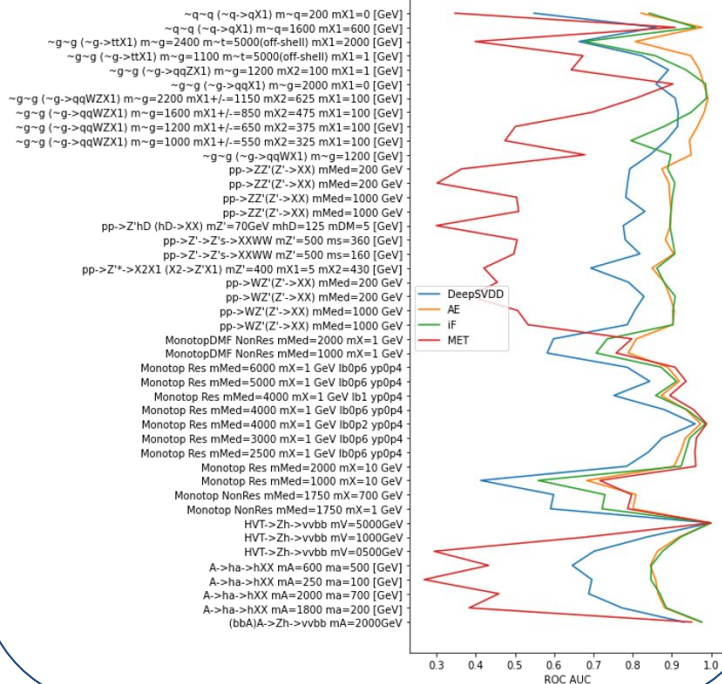




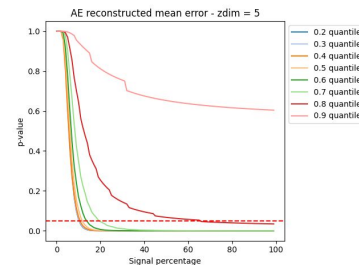
Competence Centre on Simulation and Big Data

Highlights - machine learning

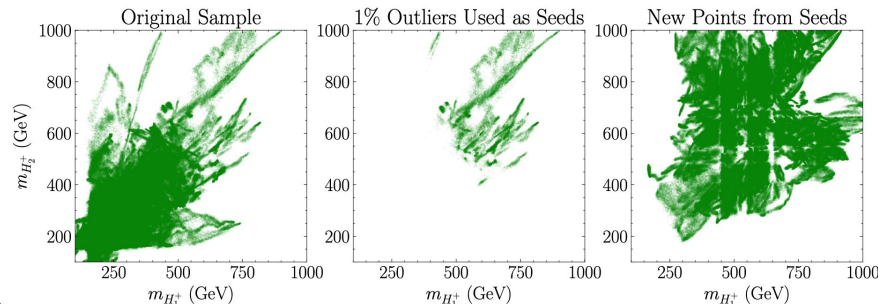
Anomaly detection in fully hadronic topologies (ATLAS)



interpreting AD results



Evolutionary Strategies and Novelty Detection: arXiv:2402.07661

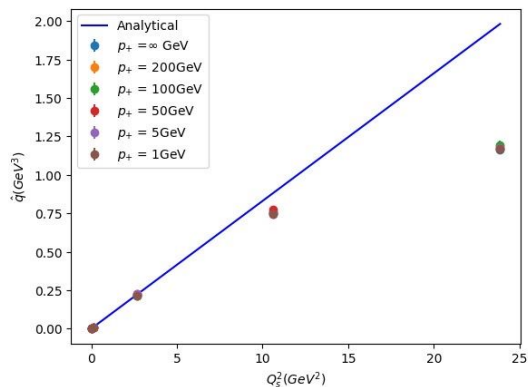




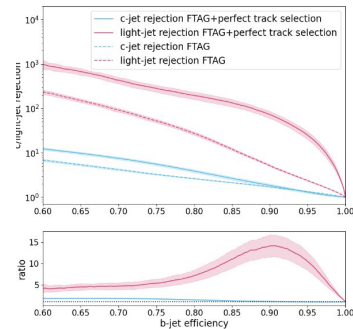
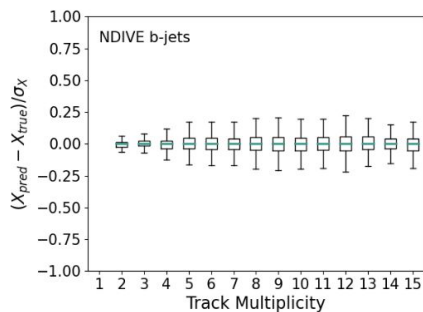
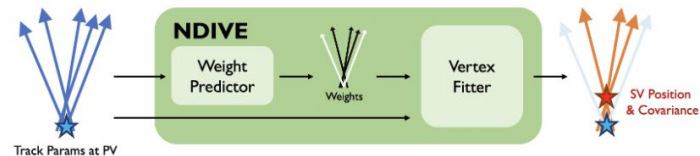
Competence Centre on Simulation and Big Data

Highlights - machine learning

quantum computing for QCD simulation



Differentiable Vertex Fitting for Jet Flavour Tagging; arXiv:2310.1280

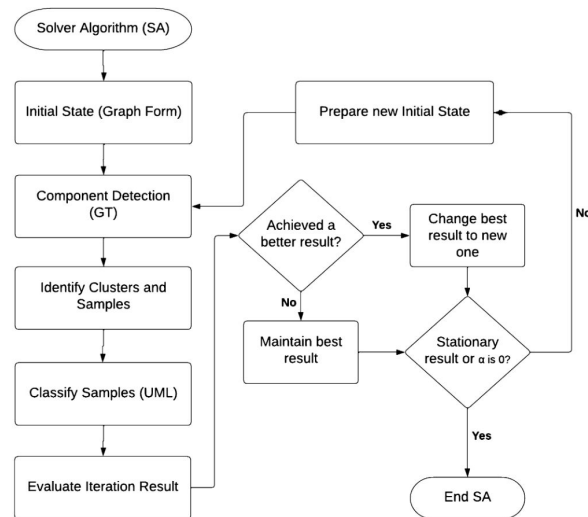
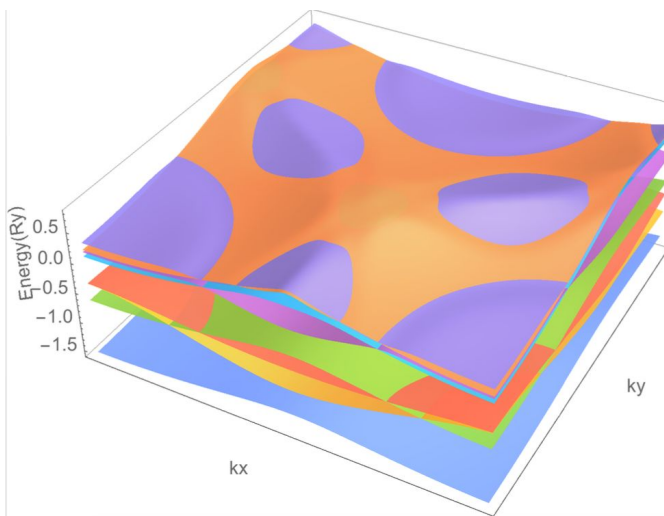




Competence Centre on Simulation and Big Data

Highlights - machine learning

ML for condensed matter physics, Comp. Phys. Comm. 295 (2024) 108972






Competence Centre on Simulation and Big Data

Highlights - machine learning

Anomaly detection for industrial quality control

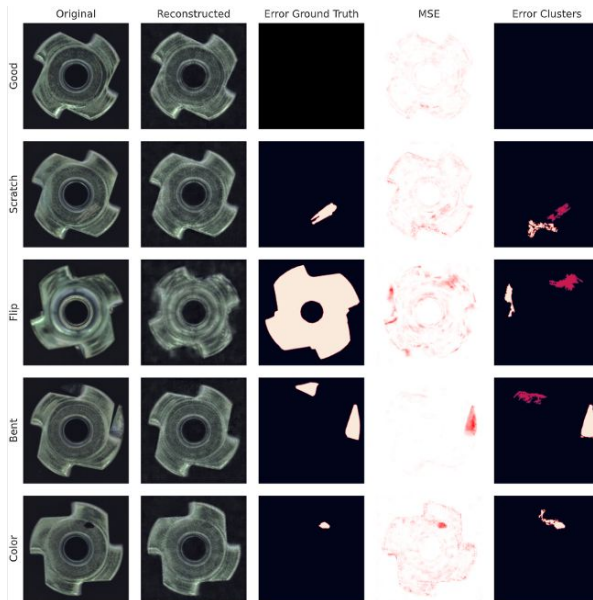


University of Minho
School of Engineering

Miguel Caçador Peixoto

**Anomaly Detection as a
Quality Control Tool in an
Industrial Context**

Master's Dissertation
Master's in Physics Engineering



Metric	AUC
--------	-----

MSE	0.6227
-----	--------

MAE	0.5860
-----	--------

BCE	0.7923
-----	--------

SSIM	0.5611
------	--------

PSNR	0.6227
------	--------

NRMSE	0.5860
-------	--------

Metal Nut	0.01	0.26
	0.89	0.86



Competence Centre on Simulation and Big Data

SWOT

Strengths

- Integration in international collaborations (HEP experiments, Geant4 collaboration)
- Diverse team, consolidated by competitive fundings (some secured by the Competence Center)
- Good synergies with the computing team and INCD

Weaknesses

- Limited access to GPUs (we are not alone there...)
- We continue to improve the communication between groups, but there is still work to be done

Opportunities

- The Horizon Europe programme has a strong focus on Digital Transformation
- The plans for a National Centre for Advanced Computing

Threats

- External services in simulation and big data are highly competitive outside some niche areas