



Muon Tomography

Muography at the University of Coimbra and at the Lousal Mine

9th July 2022, Jornadas Científicas LIP

Magda Duarte on behalf of the LouMu collaboration



LABORATÓRIO DE INSTRUMENTAÇÃO
E FÍSICA EXPERIMENTAL DE PARTÍCULAS
partículas e tecnologia



UNIVERSIDADE
DE ÉVORA

Centro Ciência Viva do Lousal
Minas de Ciência



Instituto de Ciências da Terra
Institute of Earth Sciences



FCT Fundação
para a Ciência
e a Tecnologia

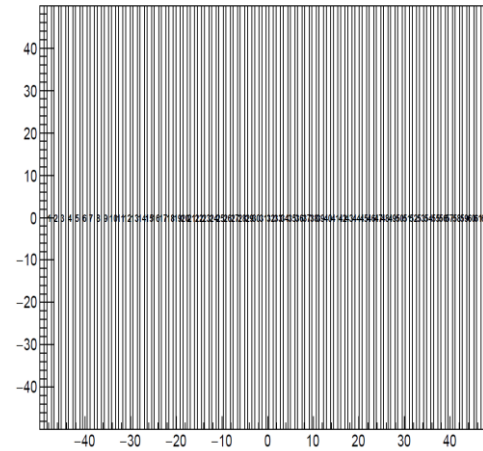


REPÚBLICA
PORTUGUESA

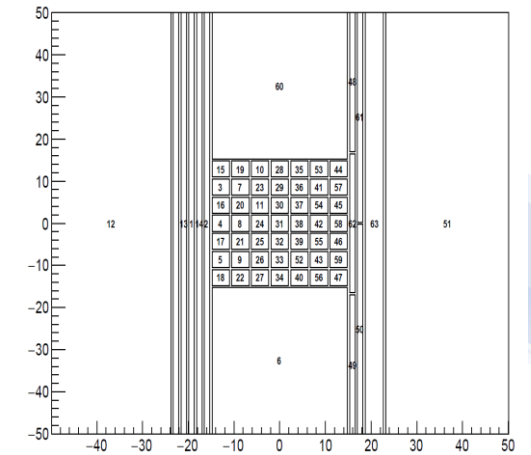
Detector



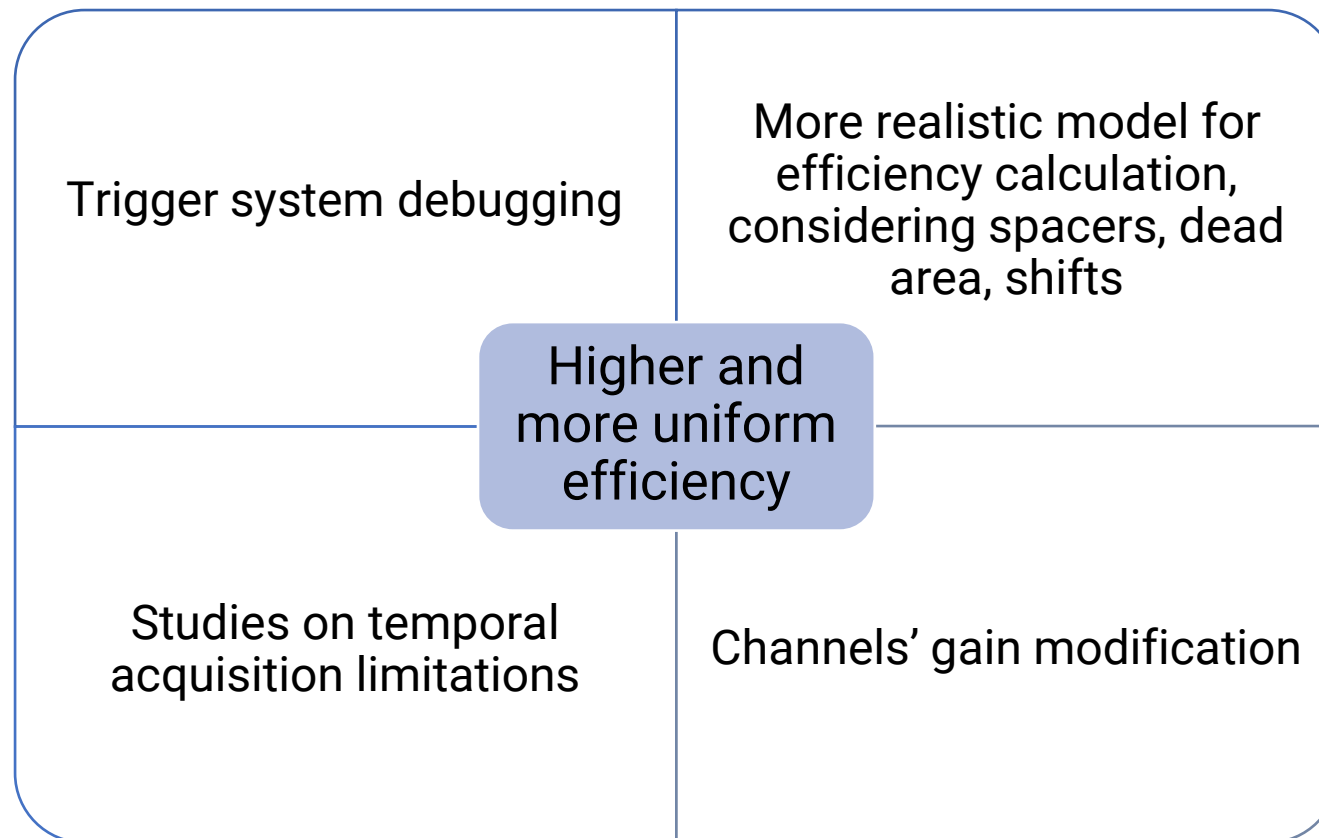
Plane 0



Planes 1, 2 e 3



Detector Developments



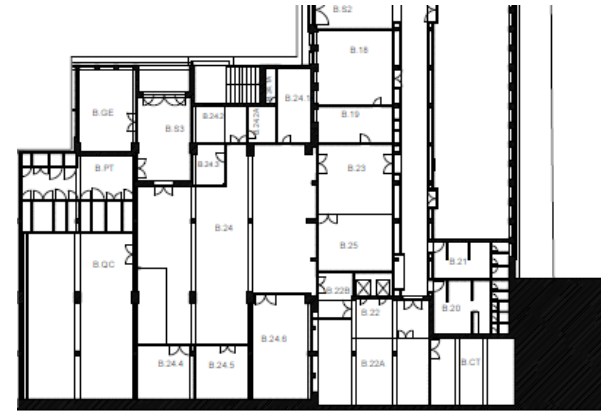
Goal

Actions

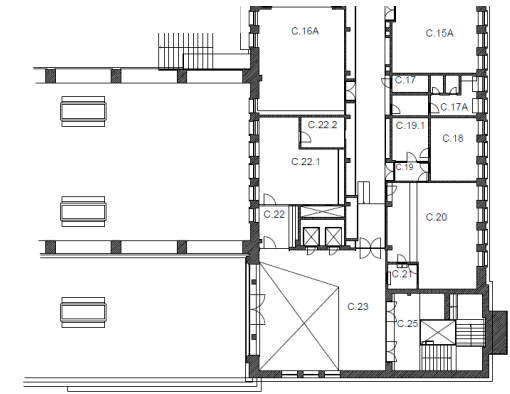


Muography at the university

4



Basement



Ground floor



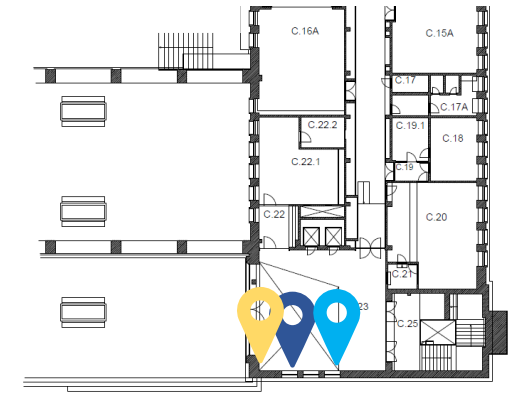


Muography at the university

5



Basement



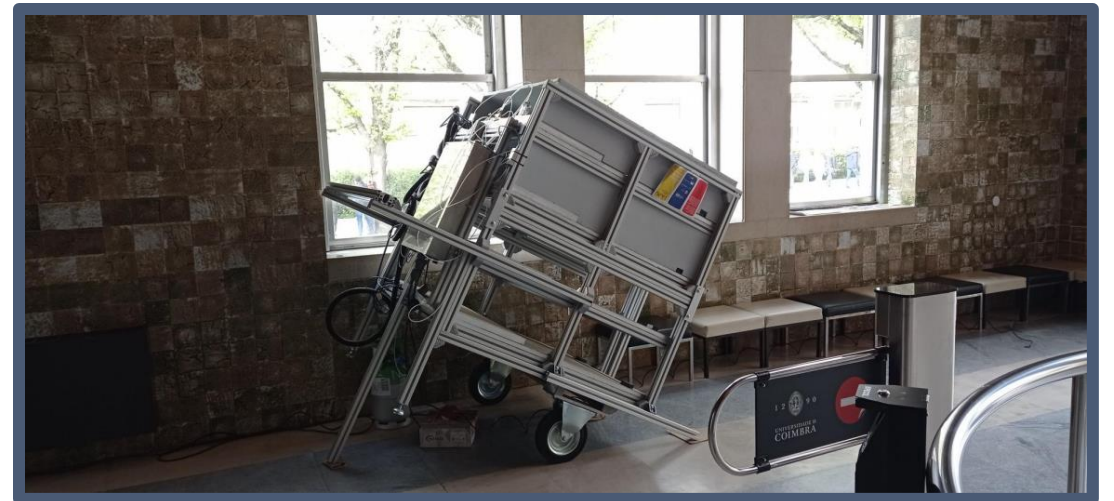
Ground floor



Muography at the university



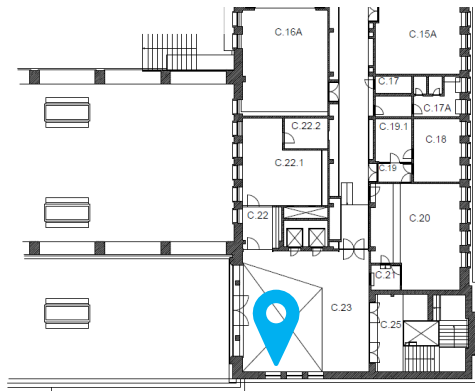
Tilted by 15°



Tilted by 28.5°

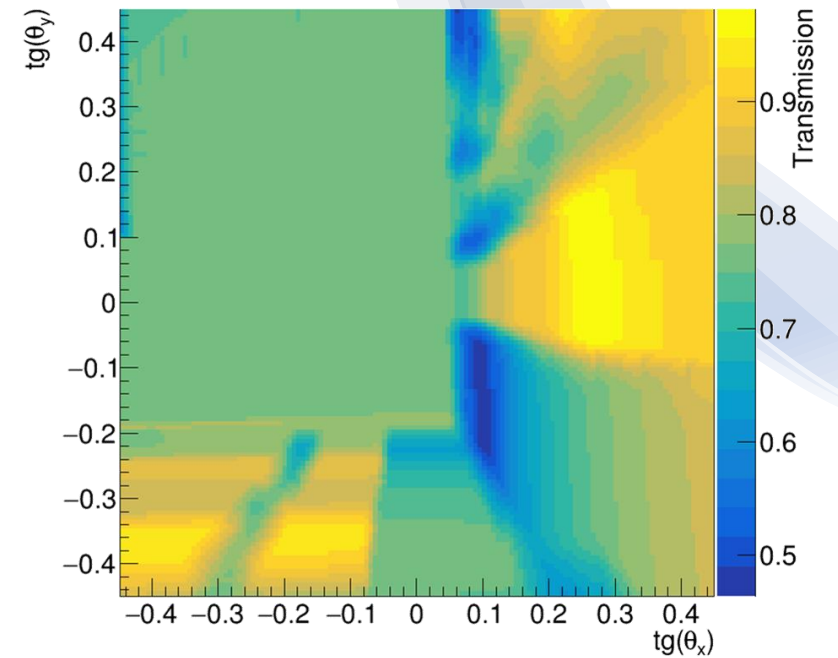
Muography at the university

Simulation



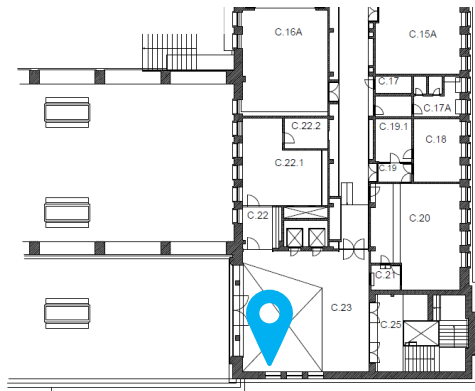
Ground floor

Theoretical transmission



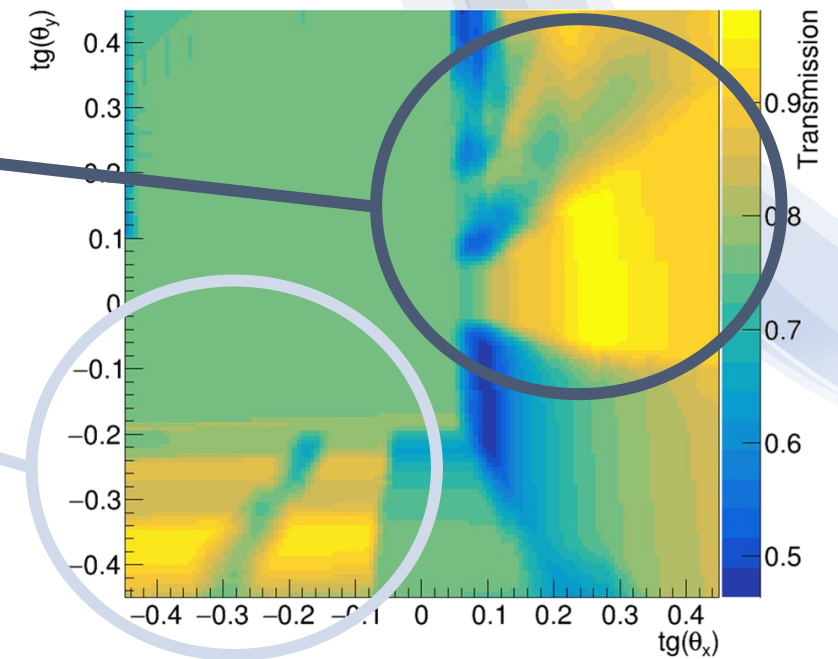
Muography at the university

Simulation



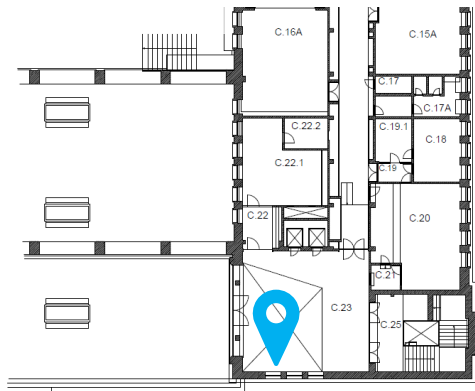
Ground floor

Theoretical transmission

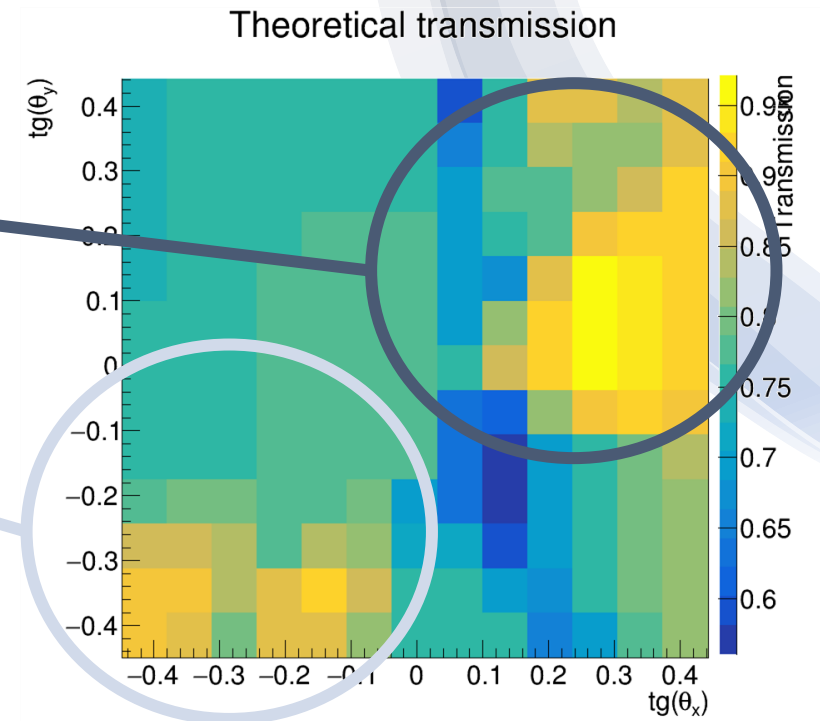


Muography at the university

Simulation

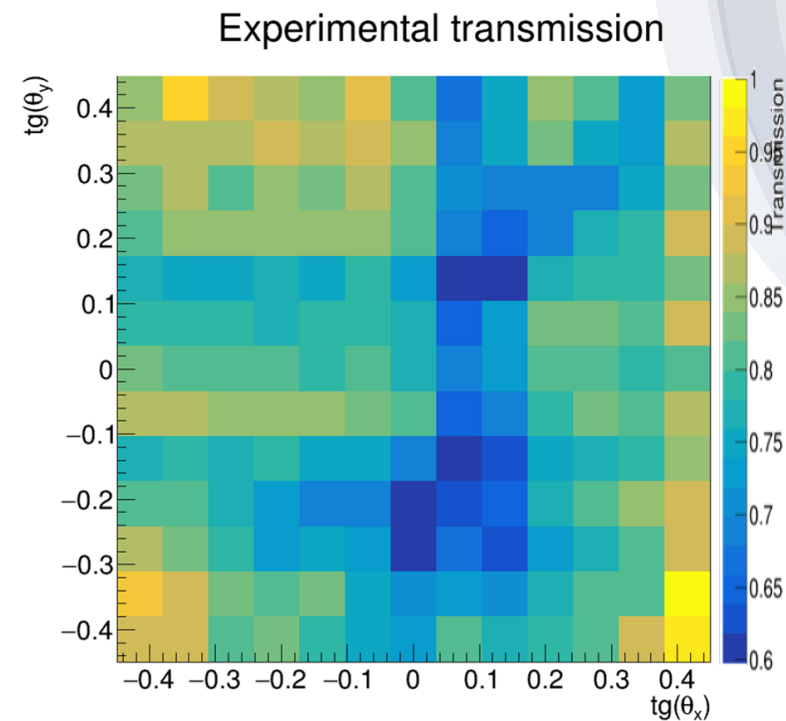
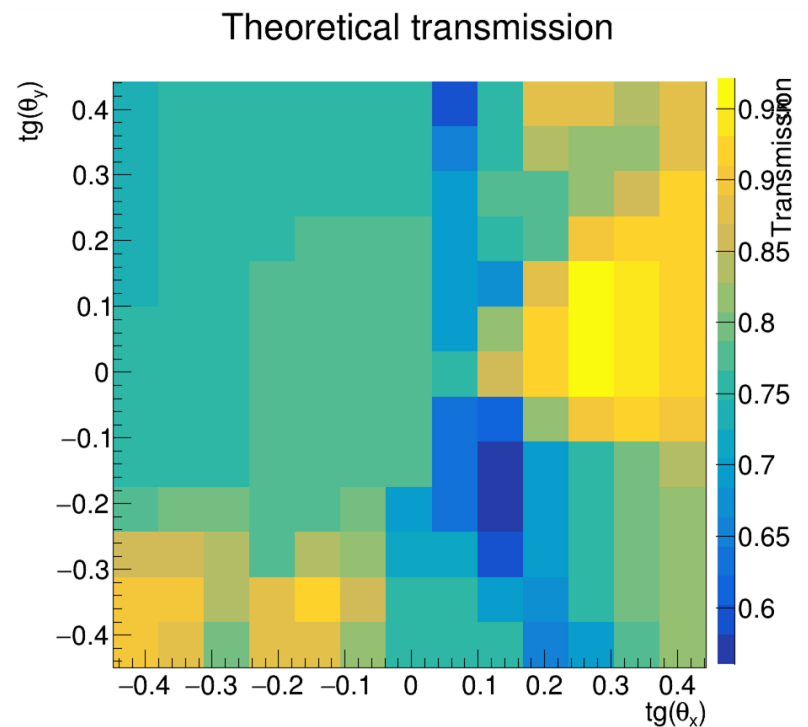


Ground floor



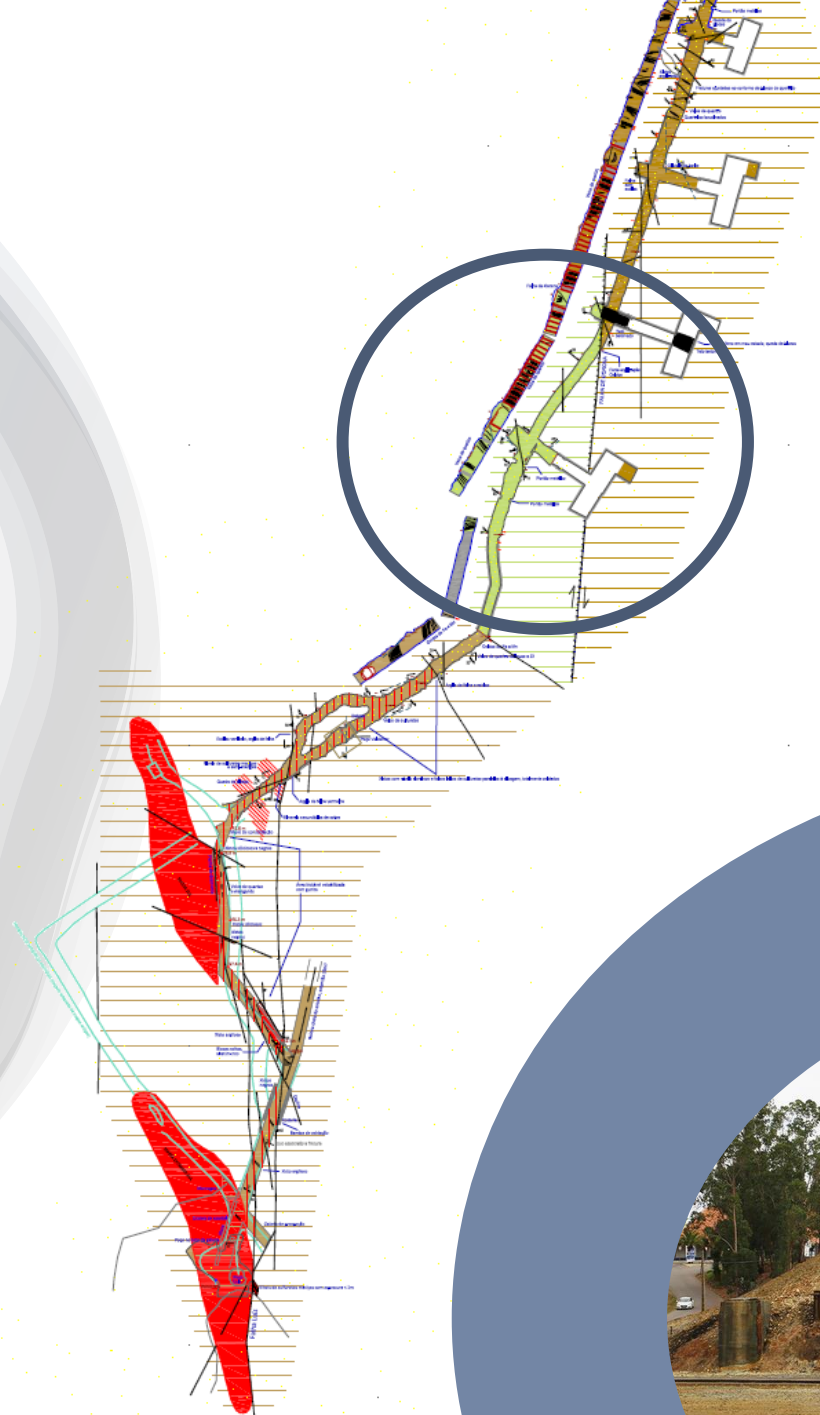
Muography at the university

Results



More muographies of the university can be found in the poster

Muography at the Lousal Mine



Muography at the Lousal Mine

Field work

- LIDAR scans
- Photogrammetry
- Rock sampling
- Differential GPS
- Seismic refraction
- Ground penetrating radar



Muography at the Lousal Mine

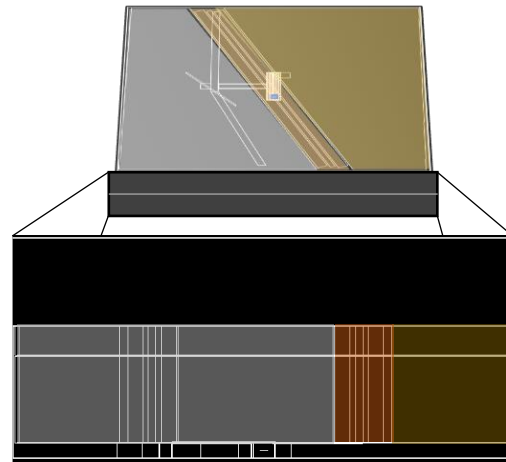
Field work



Muography at the Lousal Mine

Changes in strategy

GEANT4

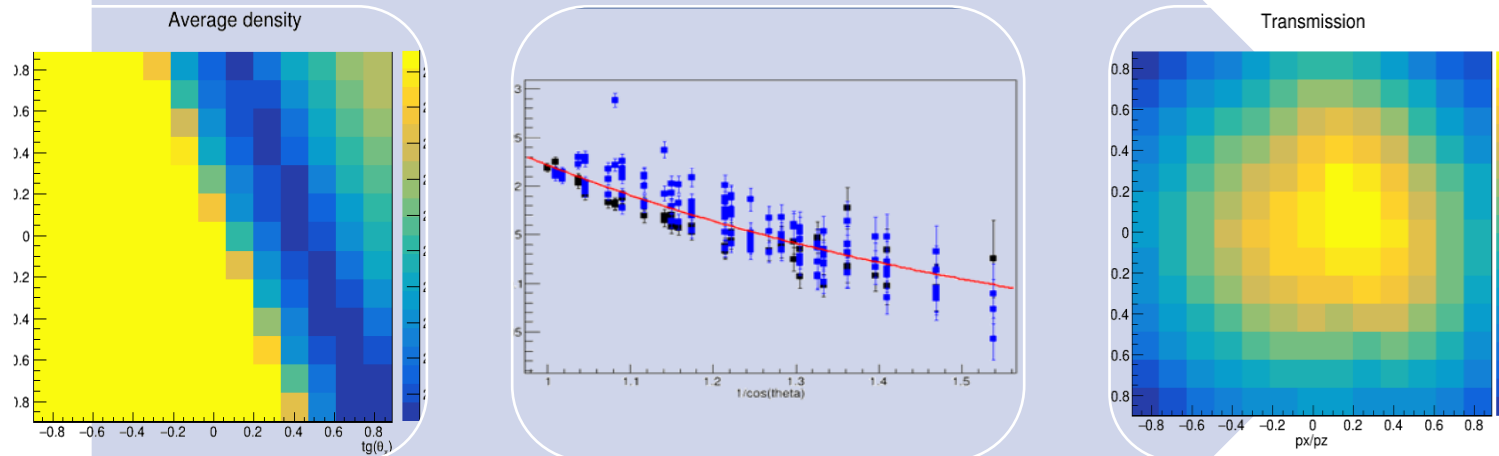


More realistic detector model

Glass - 2mm
Gas - 1mm
Glass - 2mm
Gas - 1mm
Glass - 2mm

Muography at the Lousal Mine

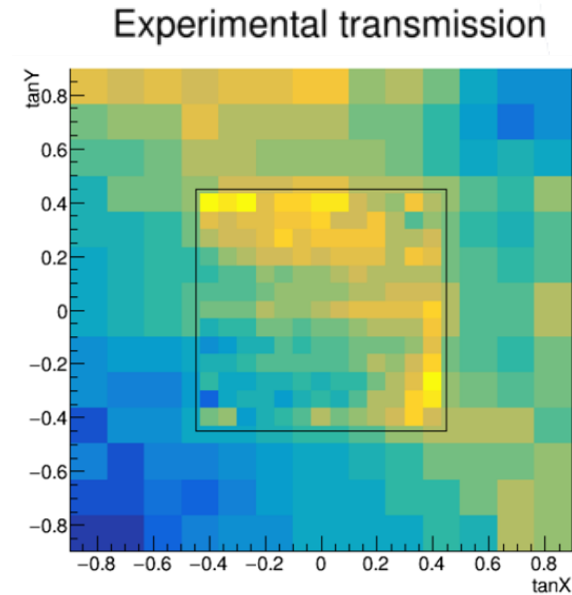
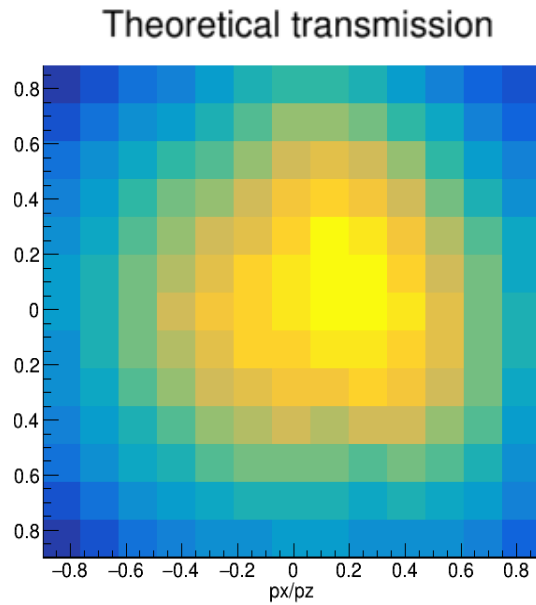
Changes in strategy



$$\text{Transmission} \propto e^{-\frac{h}{\cos \theta} \times \frac{\text{density}}{\lambda}}$$

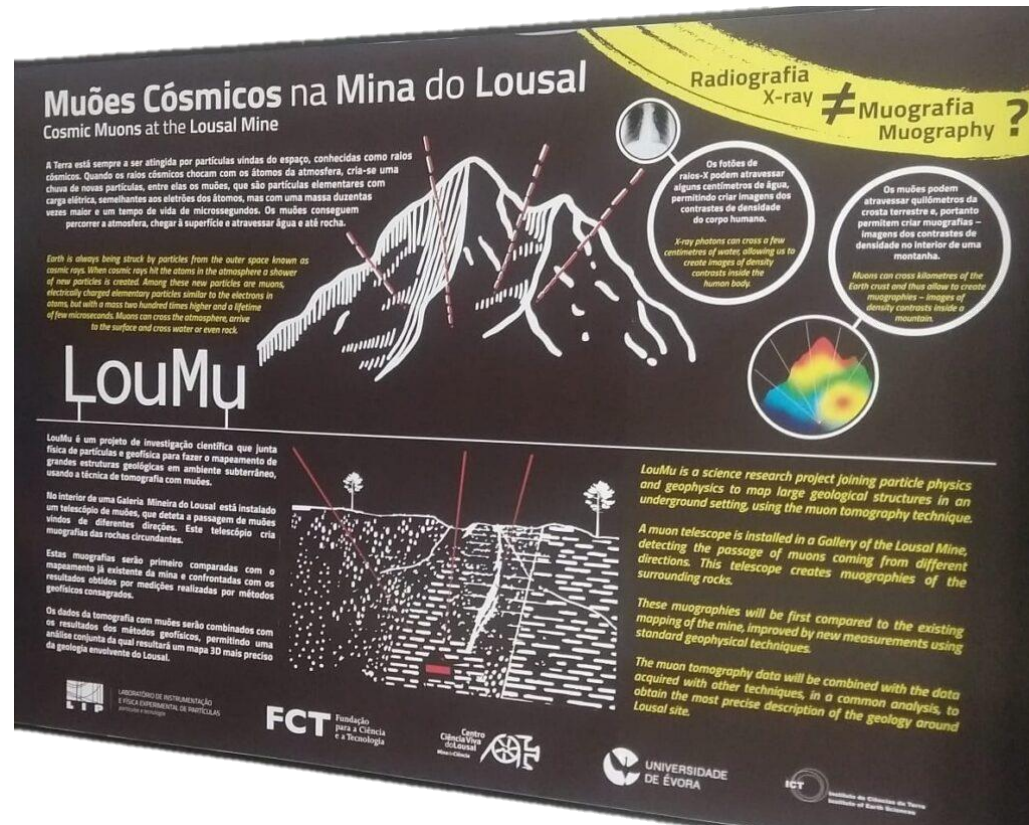
Muography at the Lousal Mine

First results



Muography at the Lousal Mine

Outreach



Future work on...

Combining several muographies of different positions/perspectives for:

- 3D reconstruction
- Higher resolution

Understanding the Lousal mine results

- Work on the density to transmission model

Acknowledgements

Instrumentation and Particle Physics group:

LIP
Lisbon:
Bernardo Tomé, Isabel Alexandre,
Lorenzo Cazon, Marco Pinto,
Mário Pimenta, Luis Afonso,
Pedro Assis, Sofia Andringa

Coimbra:
Alberto Blanco, João Saraiva,
Jorge Francisco Silva, Luís Lopes,
Paolo Dobrilla

Minho:
Magda Duarte, Raul Sarmento

LIBPhys:
C. Loureiro

Escola Superior de Saúde do
Politécnico do Porto:
F. Clemêncio

Geophysics team:

ICT – UÉvora:
Bento Caldeira, José Borges,
Mourad Bezzeghoud, Pedro
Teixeira, Rui Oliveira

LNEG:
João Matos

Outreach team:

CCV do Lousal:
João Costa, Vanessa
Pais

Collaborators:



LABORATÓRIO DE INSTRUMENTAÇÃO
E FÍSICA EXPERIMENTAL DE PARTÍCULAS
partículas e tecnologia



UNIVERSIDADE
DE ÉVORA

Centro Ciência Viva do Lousal
Minado Ciência



Instituto de Ciências da Terra
Institute of Earth Sciences



FCT Fundação
para a Ciência
e a Tecnologia

Funding:

FCT Fundação
para a Ciência
e a Tecnologia



REPÚBLICA
PORTUGUESA



Any
questions?

Thank you

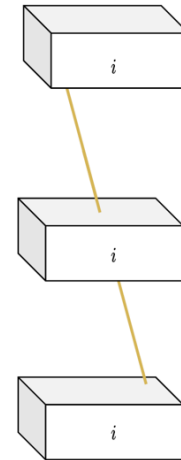
<https://pages.lip.pt/loumu/>



Backup slides

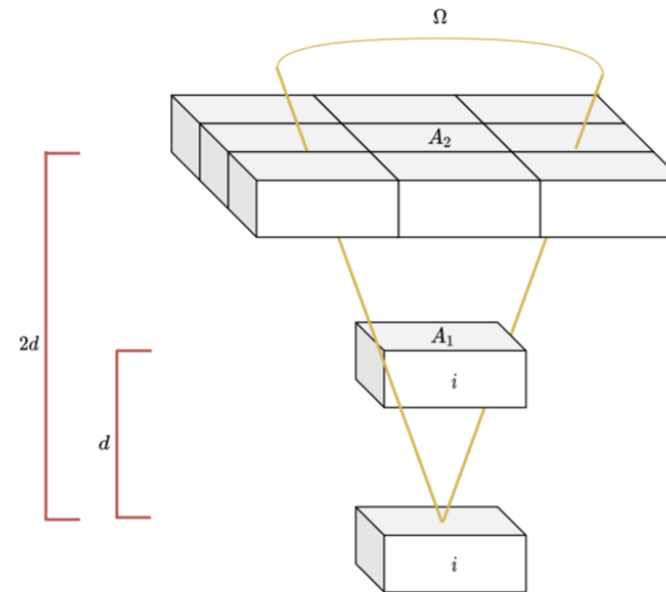
Detector's efficiency

$$\epsilon_2 [i] = \frac{N_{123} [i]}{N_{13} [i]}$$

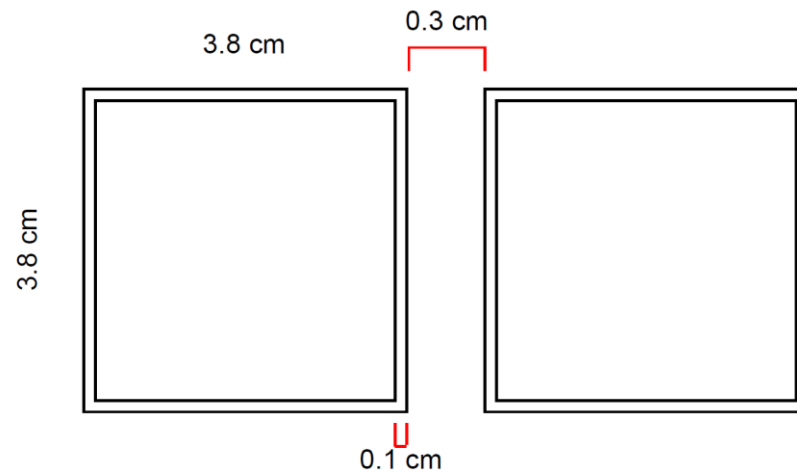


Detector's efficiency

$$\epsilon_k [i] = \frac{N_{klm} [i]}{G_k N_{lm} [i]}$$

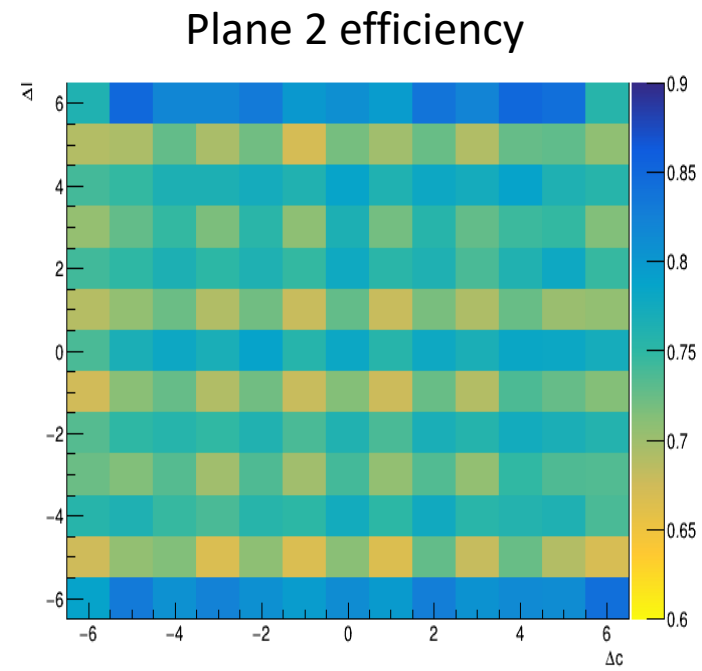


Detector's efficiency

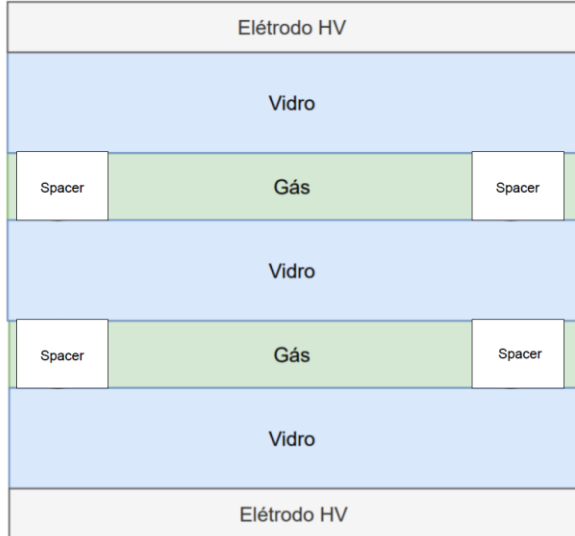


15	19	10	28	35	53	44
3	7	23	29	36	41	57
16	20	11	30	37	54	45
4	8	24	31	38	42	58
17	21	25	32	39	55	46
5	9	26	33	52	43	59
18	22	27	34	40	56	47

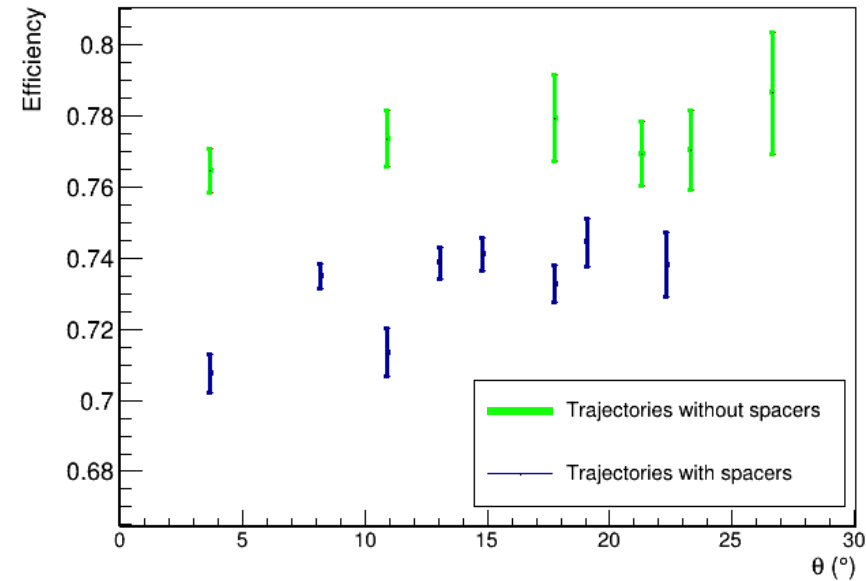
Detector's efficiency



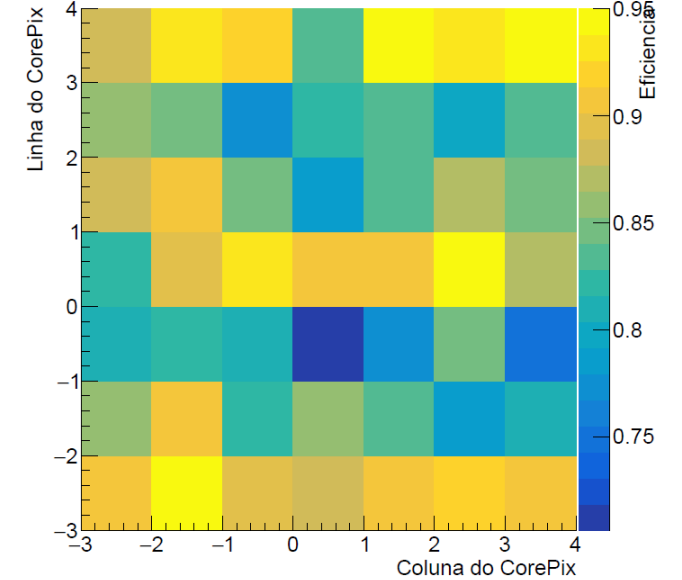
Detector's efficiency



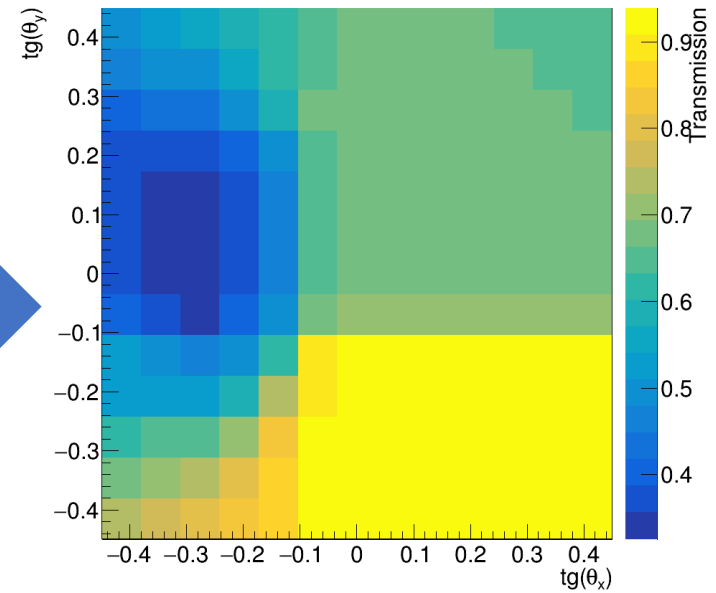
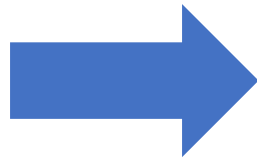
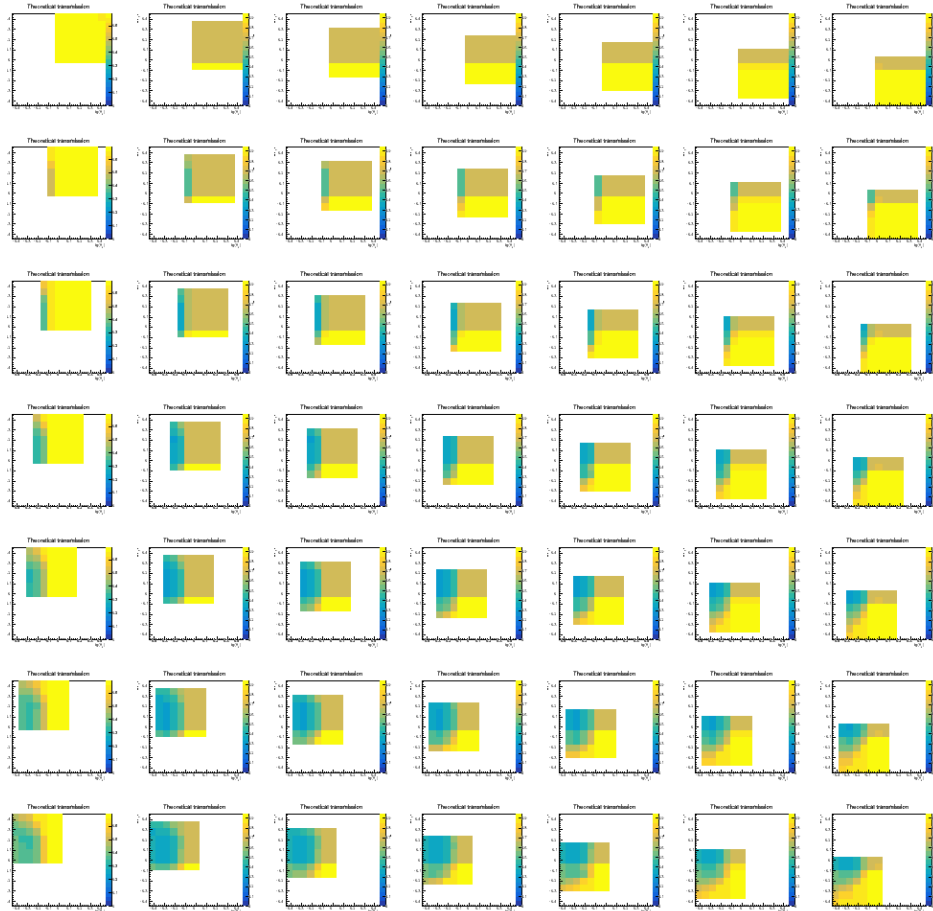
Plane 2 efficiency (muons that travel between columns in plane 2)



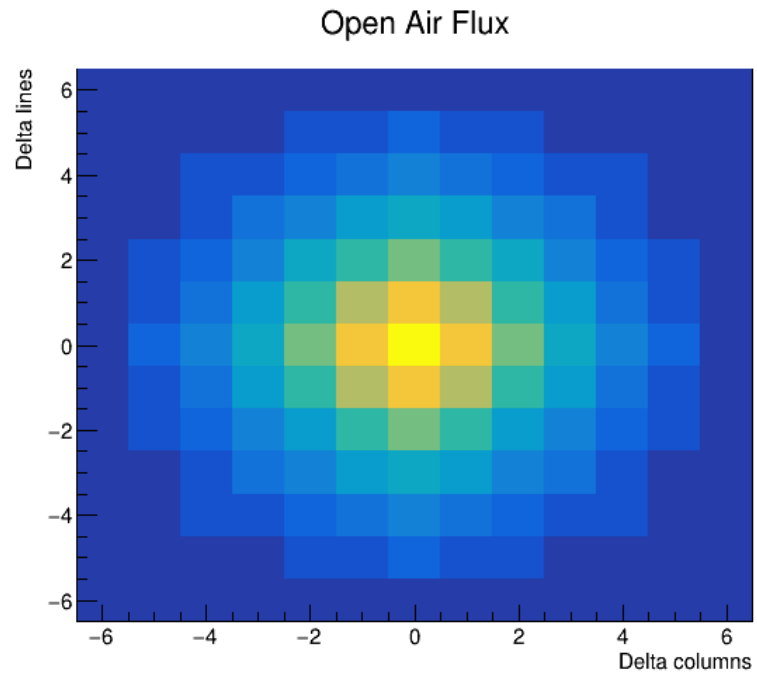
$\epsilon_{\mu}(CP0)$: Novembro e Dezembro 2020



Simulation

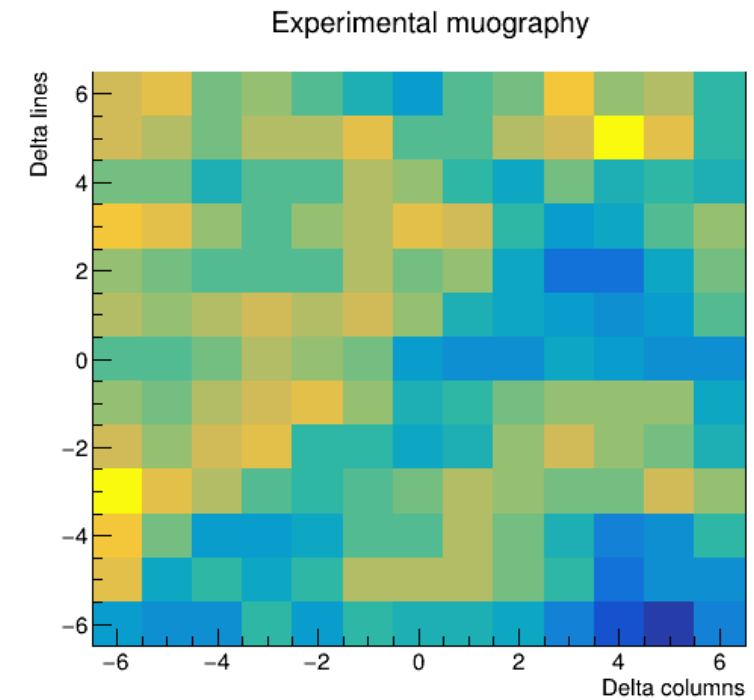
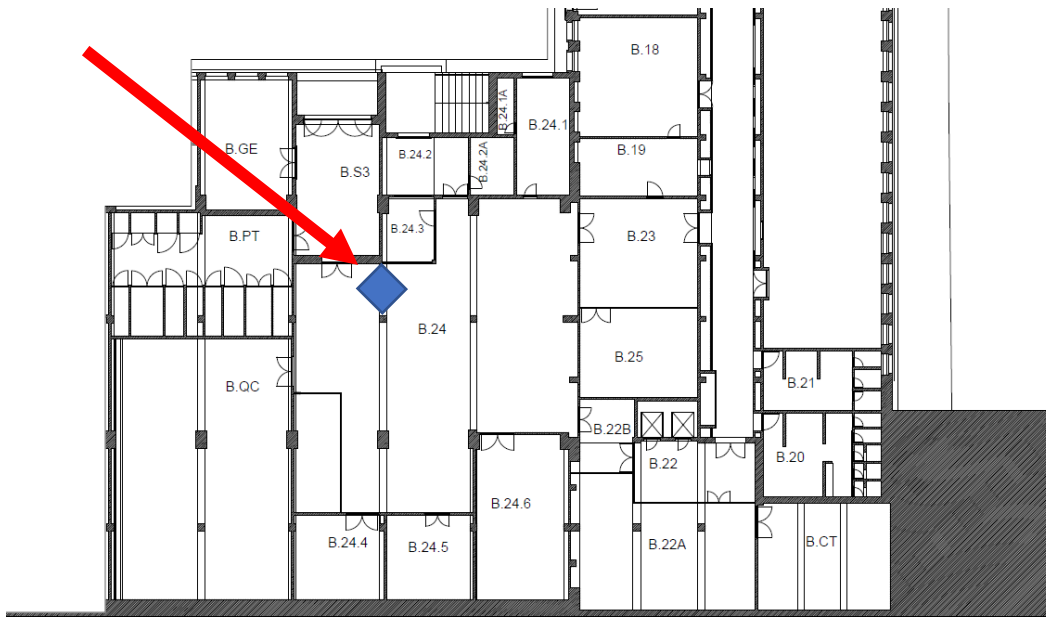


Data treatment

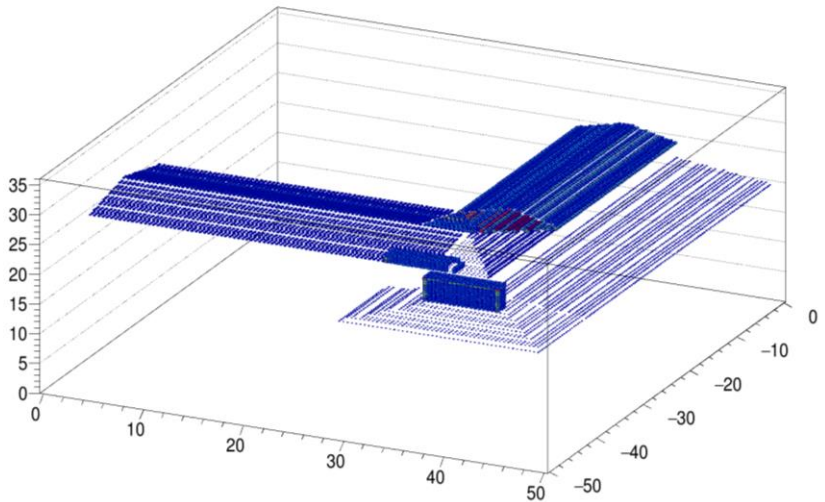
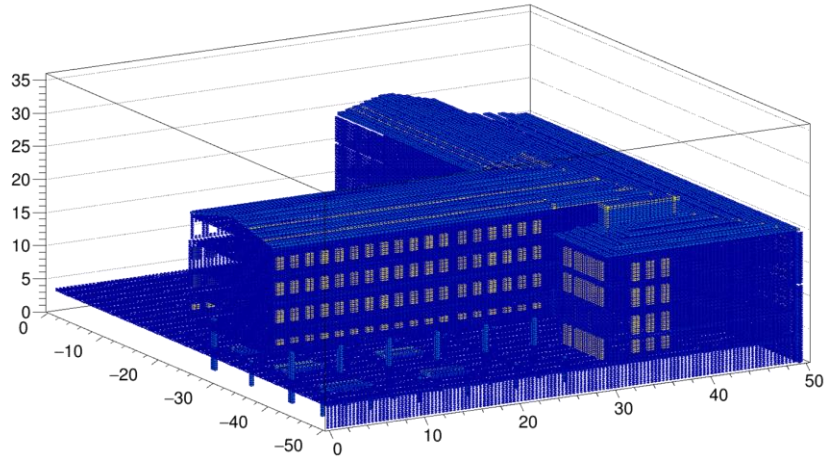


Transmission = measured muon rate \times efficiency correction / open air flux

More results

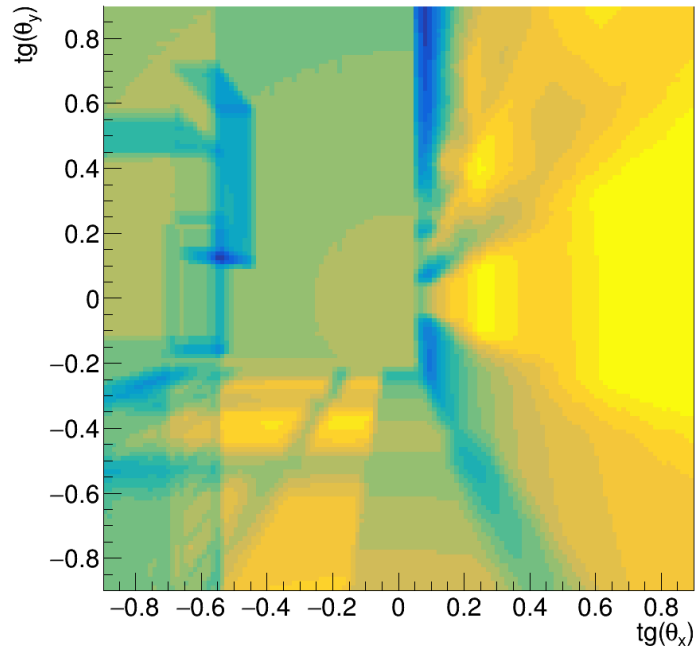


More results

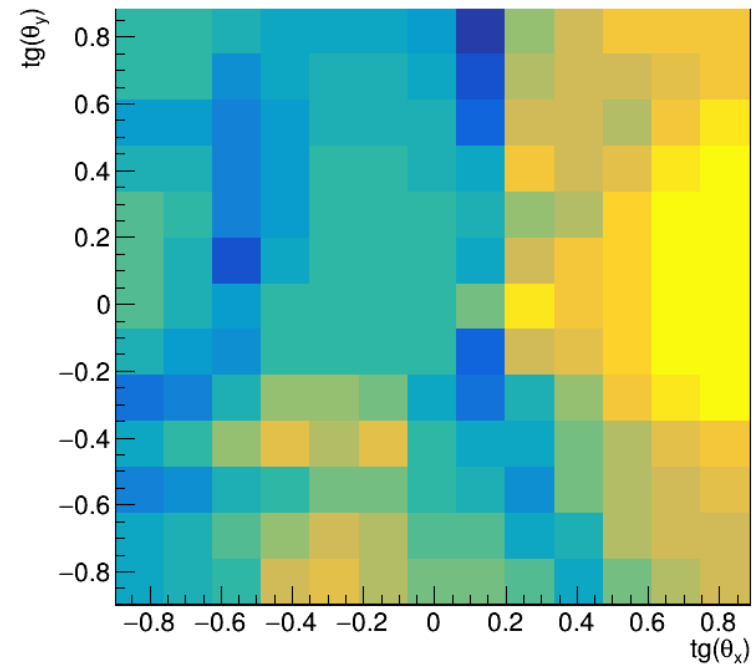


More results

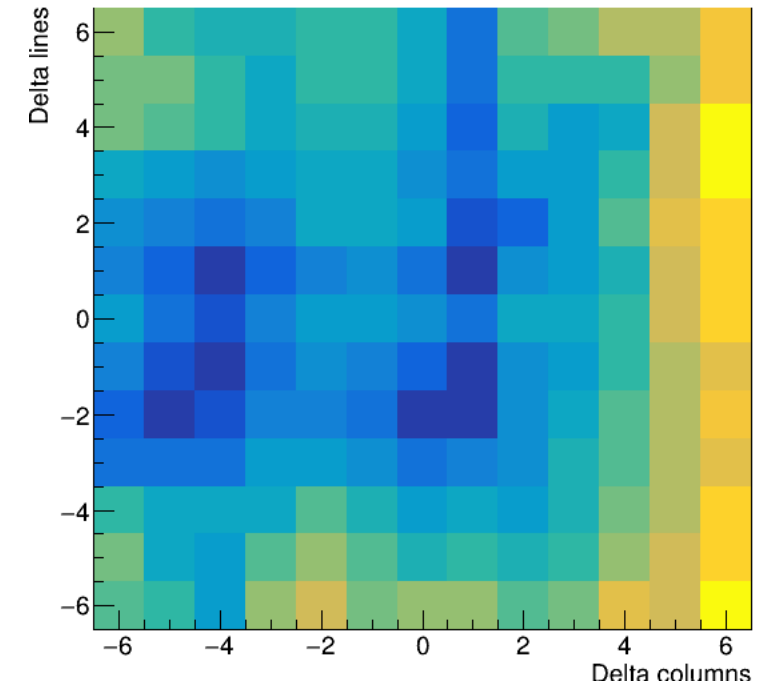
Theoretical transmission



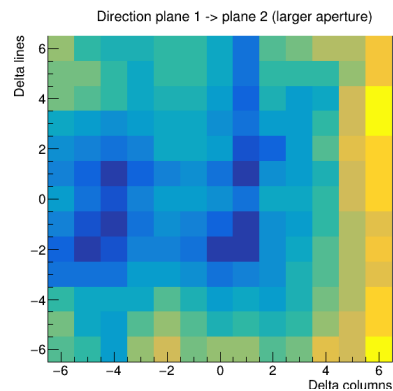
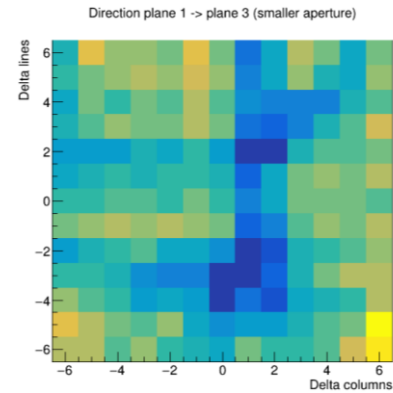
Theoretical transmission



Direction plane 1 -> plane 2 (larger aperture)



Higher resolution



Super map

